

# LA MARE HOUSEBOAT



The floating holiday home  
for summer and winter



SCAN ME

# Experience meets INNOVATION



## La Mare Houseboat

La Mare houseboats stand out from many other pontoon boats in their construction and stability. Their good stability and longevity can be explained by the three main assemblies below.

As a load-bearing element, La Mare uses a chassis frame welded and hot-dip galvanized from steel box profiles.

La Mare uses hydrodynamically efficient floats, made of polyethylene and providing additional buoyancy with a water-repellent foam. Depending on the model, these floats are attached to the starboard and port sides in several segments under the ladder frame. A steel keel sole protects the individual floats and holds them together. Special float segments include tanks for fresh water and wastewater. To enable a bow thruster, La Mare uses a float segment with a tunnel tube and a cover. There are also segments for holding a fuel tank and again a segment for the batteries.

The construction essentially consists of timber profiles. The floor and roof are made of water-repellent, multi-bonded wood. The underside of the floor is provided with a special water-repellent mat. The outdoor area consists of Scandinavian wood profiles. The interior is equipped with individually selectable laminate flooring. The interior wall cladding is made of marine plywood, which can be individually designed with veneers and decorative veneers. The ceilings are made up of panels, which can also be selected individually.

A houseboat for summer and winter - usable all year round



What is special about the La Mare boats is the decorative weather board on the outer walls and, double-glazed saloon windows and doors, providing a thermally and acoustically efficient barrier to the outside world.

Between the interior and exterior planking as well as the ceiling and floor elements, there is a water-repellent 50 mm, or 70 mm if required, strong foam insulation.

The shower and toilet offer all the comforts of home, with large shower enclosures and domestic-sized toilet. The same applied to hot water heating, which is provided by a gas or electric boiler. The optional "Floating Package" uses roof-mounted solar panels to provide a constant 230 V power supply on board so making the houseboat essentially independent of an external power supply. This will make La Mare special: you are self-sufficient on board. If you order optional heating elements for water and waste water tanks, you can also use your floating holiday home in winter.

The use of the La Mare boats is also possible in the frozen water or harbor. An external shore connection should be used here.

With a La Mare houseboat you are able to choose your neighbors and experience the charm of nature with your holiday home.

A weekend on a La Mare houseboat will make you relax and recharge your own batteries for the coming week.

For you it combines the advantages of a fixed holiday home with the advantages of a motor yacht.

A floating living space in the marina is the perfect choice, especially for older people who may have been on the water for a lifetime, where the strength for handling declines.

La Mare products are available with or without engines.

We would like to be happy to advise you for the right options.

We offer La Mare boats in different sizes and different equipment. We would like to be happy to design an individual La Mare houseboat for you.

We look forward to your questions.

Floating holiday home in the marina - water hiking in beautiful nature

LA MARE  
HOUSEBOAT



LA MARE  
HOUSEBOAT

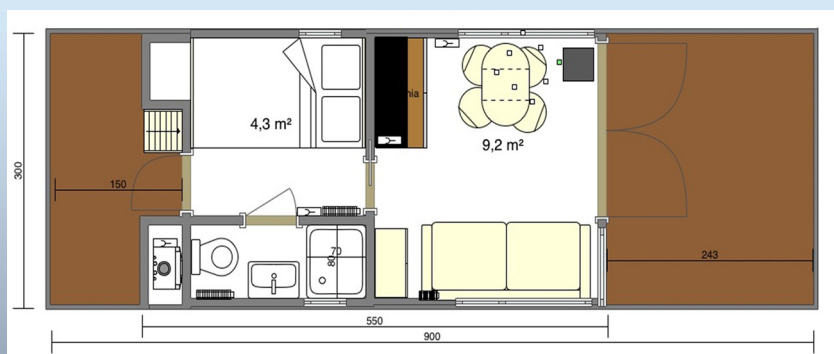
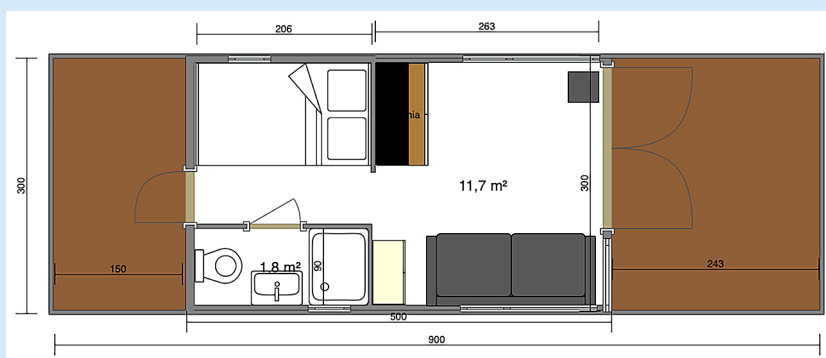
# LA MARE



# LA MARE Apart XS



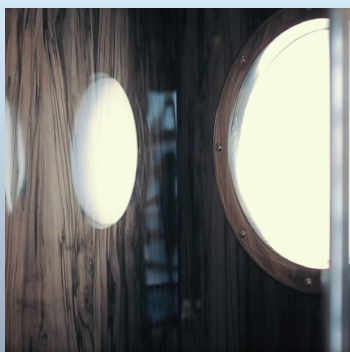
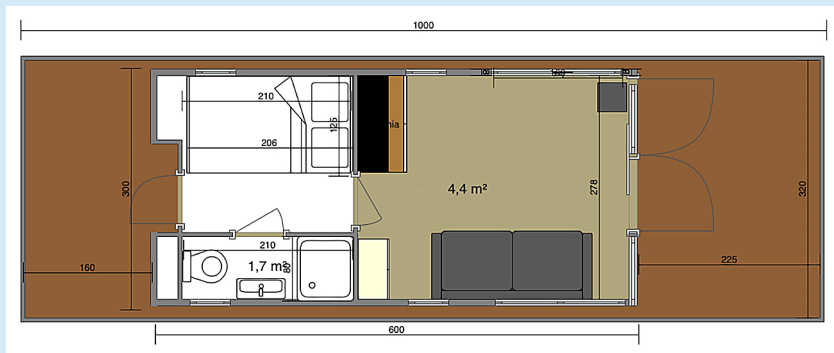
Length (m):	9,00
Width (m):	3,06
House size (m):	5,50 x 3,00
Living space (m <sup>2</sup> ):	15
Draft (m):	0,50
Height above water (m):	2,80
Sleeping place:	2 – 4



# LA MARE Apart S



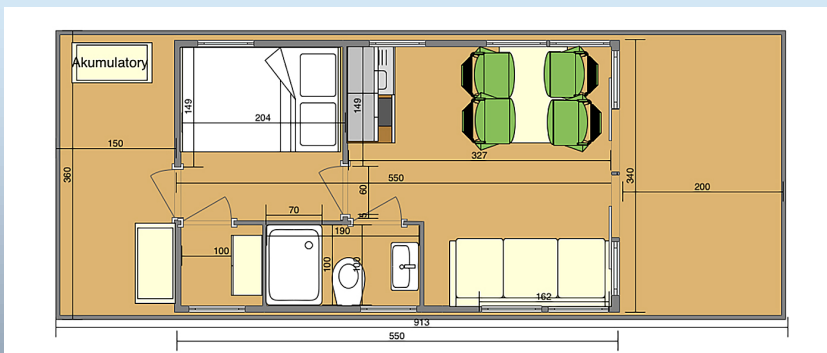
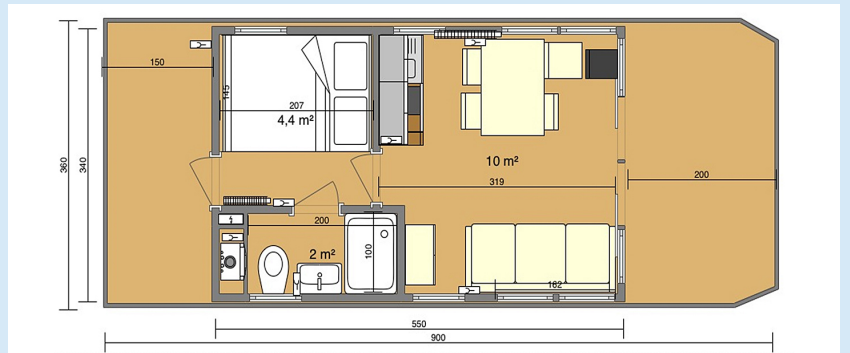
Length (m):	10,00
Width (m):	3,20
House size (m):	6,00 x 3,00
Living space (m <sup>2</sup> ):	18
Draft (m):	0,50
Height above water (m):	2,80
Sleeping place:	2 – 4



# LA MARE Apart M



Length (m):	9,00
Width (m):	3,60
House size (m):	5,50 x 3,40
Living space (m <sup>2</sup> ):	18
Draft (m):	0,50
Height above water (m):	2,80
Sleeping place:	2 - 4

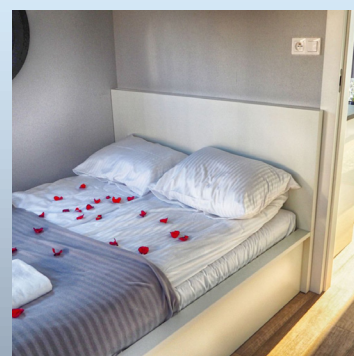
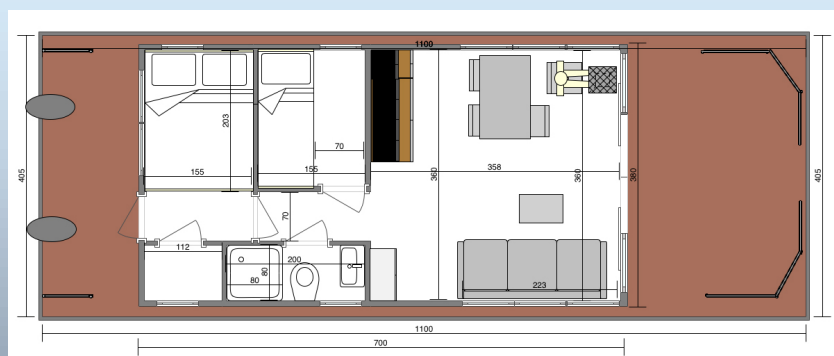
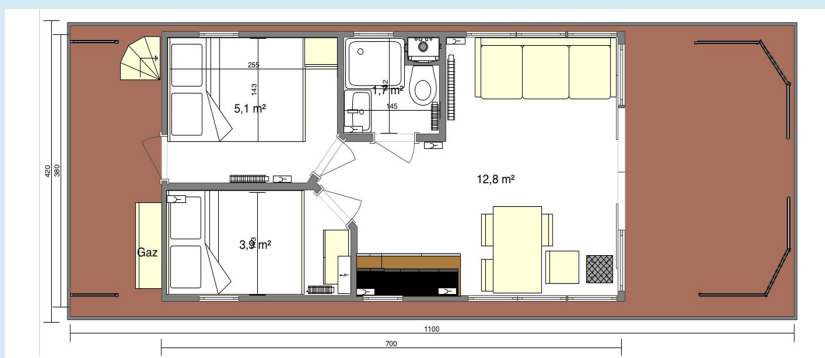




# LA MARE Apart L



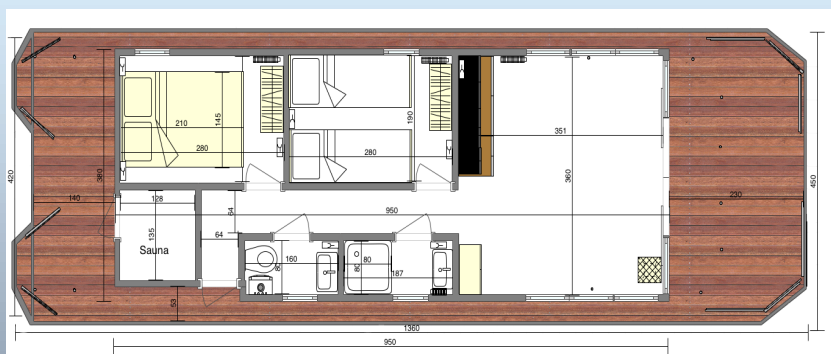
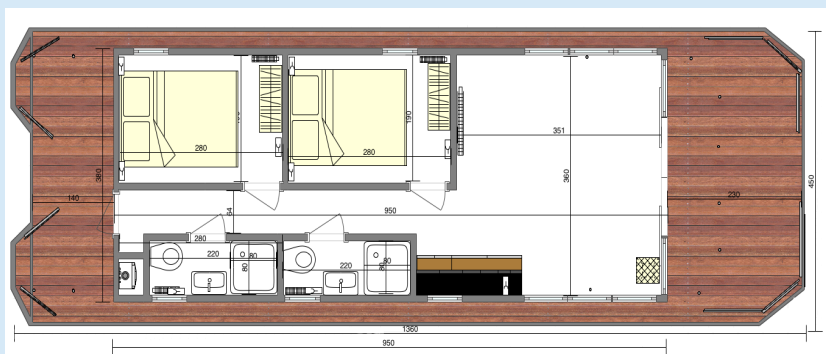
Length (m):	10,80
Width (m):	4,20
House size (m):	7,00 x 3,60
Living space (m <sup>2</sup> ):	24
Draft (m):	0,50
Height above water (m):	2,80
Sleeping place:	2 – 6



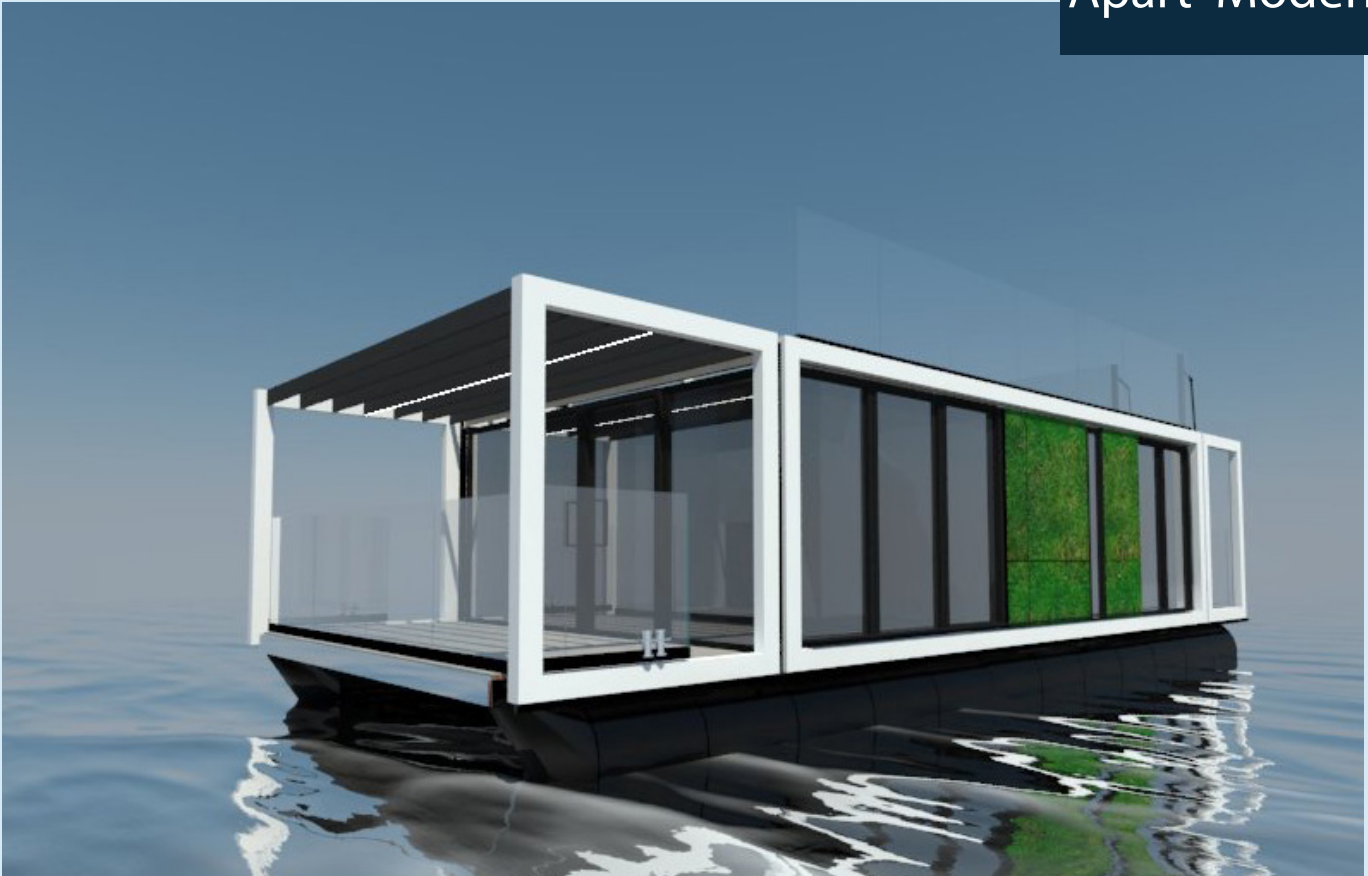
# LA MARE Apart EL



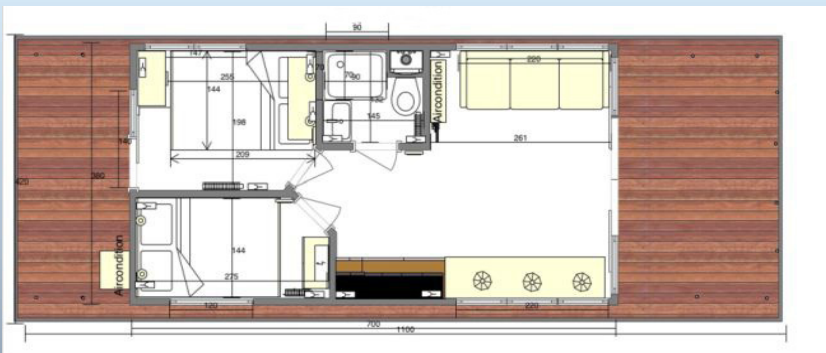
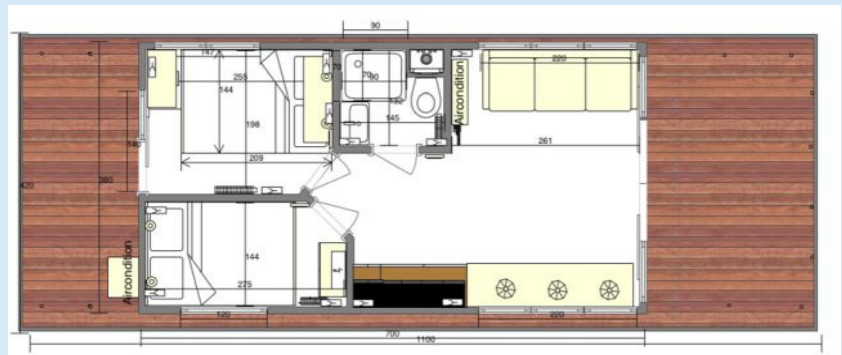
- Length (m): 13,00
- Width (m): 4,50
- House size (m): 9,50 x 3,80
- Living space (m<sup>2</sup>): 36
- Draft (m): 0,50
- Height above water (m): 2,80
- Sleeping place: 2 – 8



# LA MARE Apart Modern 11



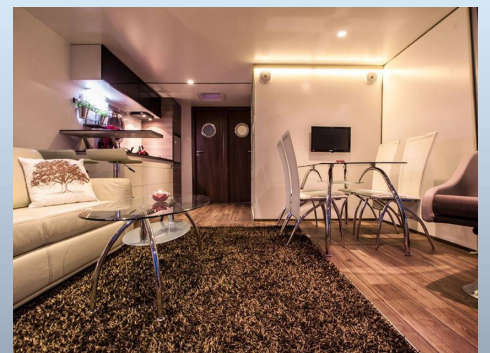
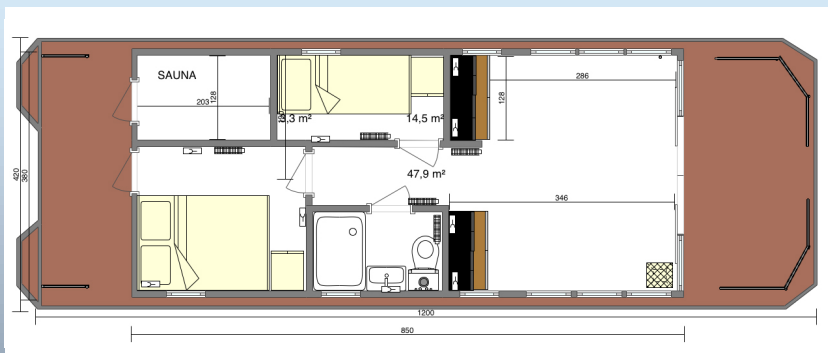
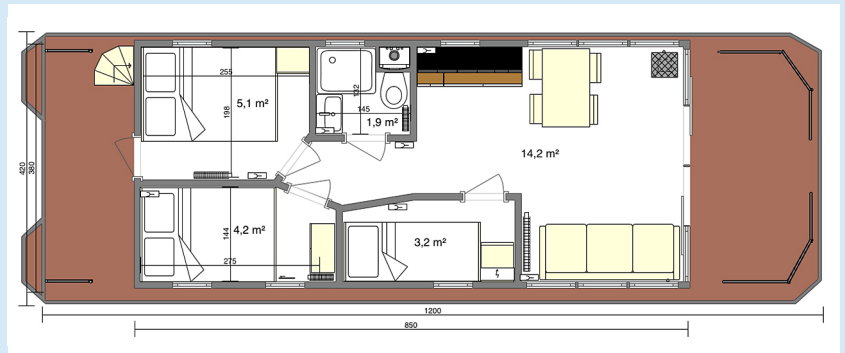
Length (m):	11,00
Width (m):	4,20
House size (m):	8,50 x 4,20
Living space (m <sup>2</sup> ):	35
Draft (m):	0,50
Height above water (m):	2,80
Sleeping place:	2 – 8



# LA MARE Apart LL



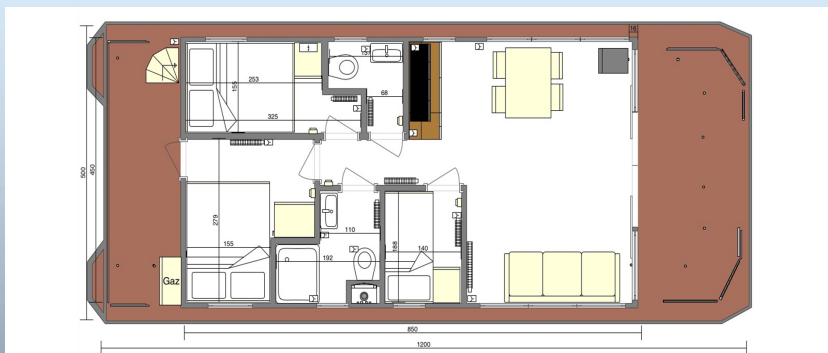
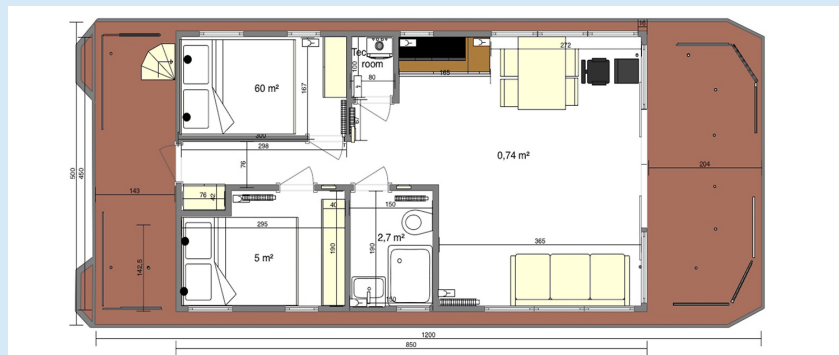
Length (m):	12,00
Width (m):	4,20
House size (m):	8,50 x 3,60
Living space (m <sup>2</sup> ):	30
Draft (m):	0,50
Height above water (m):	2,80
Sleeping place:	2 – 8



# LA MARE Apart XL



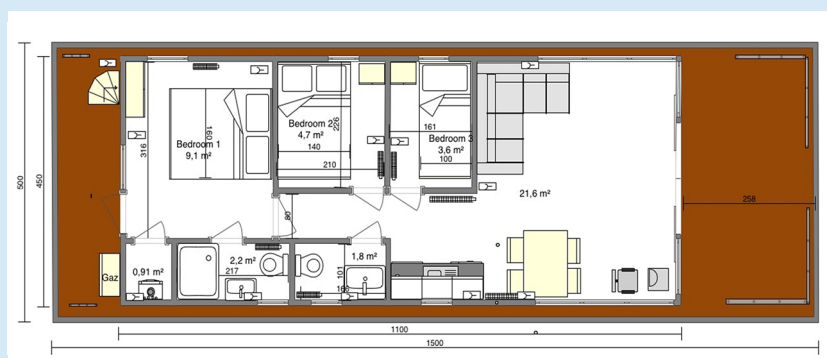
Length (m):	12,00
Width (m):	5,00
House size (m):	8,50 x 4,50
Living space (m <sup>2</sup> ):	46,00
Draft (m):	0,50
Height above water (m):	2,80
Sleeping place:	2 – 8



# LA MARE Apart XXL



Length (m):	15,00
Width (m):	5,00
House size (m):	11,00 x 4,50
Living space (m <sup>2</sup> ):	45,00
Draft (m):	0,50
Height above water (m):	2,80
Sleeping place:	2 – 8



# LA MARE Houseboat



## \* Floating package:

Base motor<sup>2</sup>, 65 Ah starter battery, 70 l fuel tank,

Laminated control console (white or gray), steering wheel, solar panels<sup>2</sup>  
270 watt each, 230 V inverter with 2400 watt batteries<sup>2</sup> 240 Ah each,  
rear view camera, navigation lights, horn, mooring lines

<sup>2</sup> Number / performance depending on the model

All pictures are sample photos and may contain additional equipment.

All prices without 19% VAT.

Subject to technical changes.



# LA MARE HOUSEBOAT

## Sales & Charter

### To buy / Invest

- from 47.500,- EUR

LaMare Marine will be happy to provide you an individual offer for your year-round houseboat.

### Charter

- for 2 to 8 people
- from 625-EURO/week



### Our partners

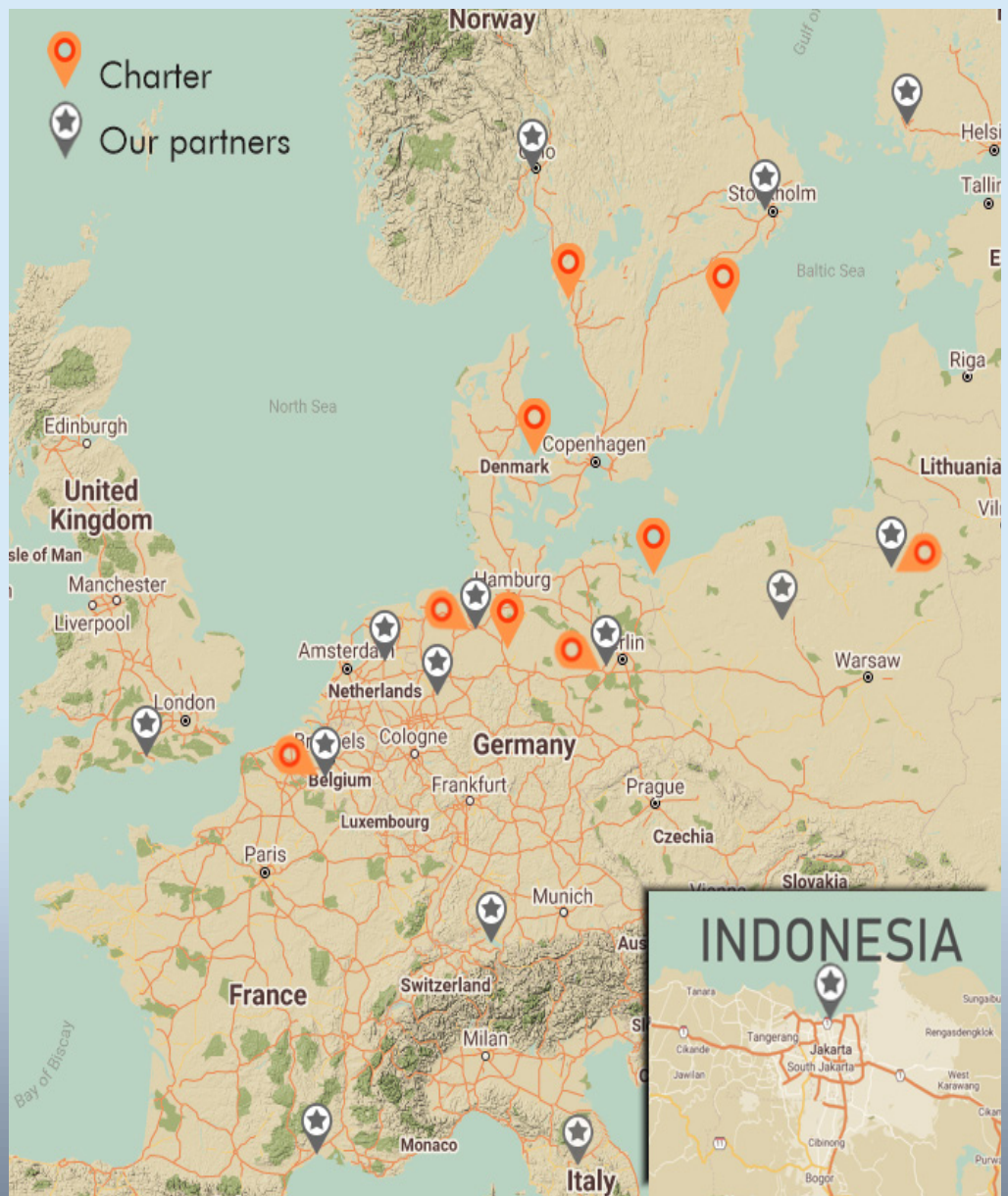
PT. SENTRAL NUSA MARITIM:  
Office: +62 857 8122 9007  
e-mail: snmaritim@dnet.net.id

La Mare Benelux:  
Office: +31 (0)64006-2723  
e-mail: lamare@schepenkring.nl

Why Boats Hamble:  
Office: +44 (0)2382-120000  
e-mail: info@whyboats.com

More partners on our website

LaMare Sp.z.o.o  
85-757 Bydgoszcz, Poland  
biuro@lamare.pl  
Tel. +48 536 005 999  
Str. Portowa 10



[www.lamare.pl](http://www.lamare.pl)

Experience meets INNOVATION



Republic  
of Poland



European Union  
European Regional  
Development Fund

